

Intensiv AntiReflex Pat. pend. N° 2007 0320/07

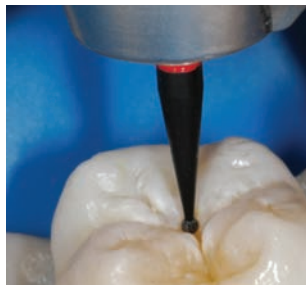
Prof. I. Krejci, University of Geneva (Switzerland)

The dull black surface of the new Intensiv AntiReflex diamond instrument range allows a blind-free view on the operation field despite the indispensable strong lighting.

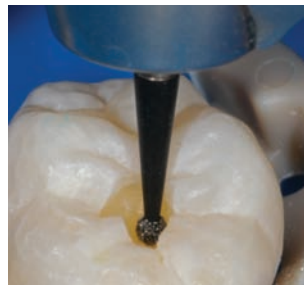
- **Blind-free view on the operation field**
- **Clear contrast of the diamond instrument to the operation field**
- **Constant concentration level and comfortable treatment**

Indications

- Minimally invasive treatments
- Micro-invasive treatments
- Treatments with magnifying optical devices, protective glasses and standard mouth mirrors



Micro-invasive probing cavity at the fissure or the groove in case of suspected caries



Opening of larger carious lesions in posterior teeth



Margin bevelling and finishing of occlusal cavities

Diamond instrument line (minimally invasive)

AR										
ISO ø 1/10 mm	007	008	012	009	010	010	012	012	011	010
L mm				4.0	2.8	2.8	5.0	2.0	3.8	3.0
FG Standard										
524		AR199								
524 ■			AR8200			AR8218			AR8224	
514 ■	AR4199			AR4412	AR4218		AR4205S	AR4256		AR40D1
ISO No.	314 001	314 001	314 001	314 139	314 237	314 235	314 247	314 277	314 236	314 699