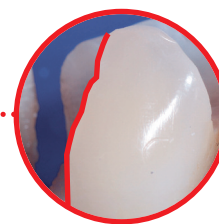
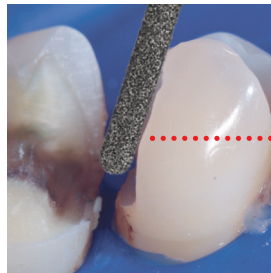


Intensiv PrepTwins

Pat.Pend.EP10162150.6

New!

Diamond Polymer Finisher for refined shaping of all preparations



Diamond instruments are covered by a polymer/diamond mixture, respecting the same form and dimension as the previous applied diamond instrument.

The removal of detached enamel prisms and irregular surfaces (so called wave structure) created by rotating instruments, allows an improvement and longer life span of intact restorations.



The metal core below the polymer is diamond coated equally to the diamond grain in the polymer.

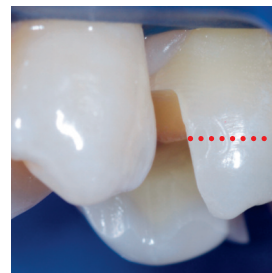
Clinical images: Dr. Alessandro Devigius, Bülach, Switzerland



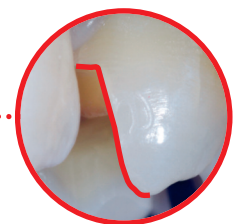
Finishing of cavity edges with Intensiv PrepTwins RA PT43882/6, cylinder, 40 µm, visible irregular margin caused by the rotating diamond instrument



Finishing advanced stage, visibly smoother cavity margin



Regular cavity margin preserving the specific created preparation



"A finisher in the same shape as the previous applied preparation instrument."



Complete range of shapes available in:



Intensiv SA
Via al Molino 107
6926 Montagnola
Switzerland

Tel. +41 91 986 50 50
Fax +41 91 986 50 59
info@intensiv.ch
www.intensiv.ch

Intensiv
Swiss Dental Products