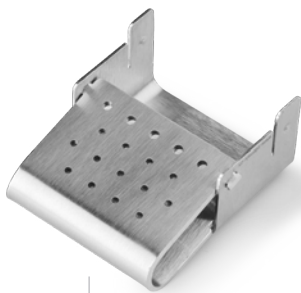


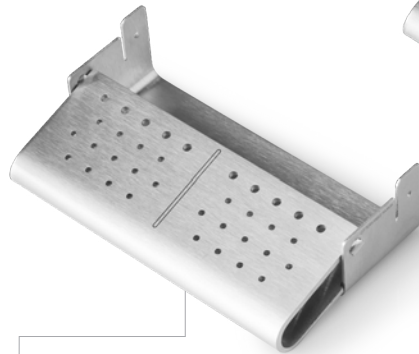
Intensiv HygienicTray

Stainless steel instrument tray
for the arrangement of rotating instruments



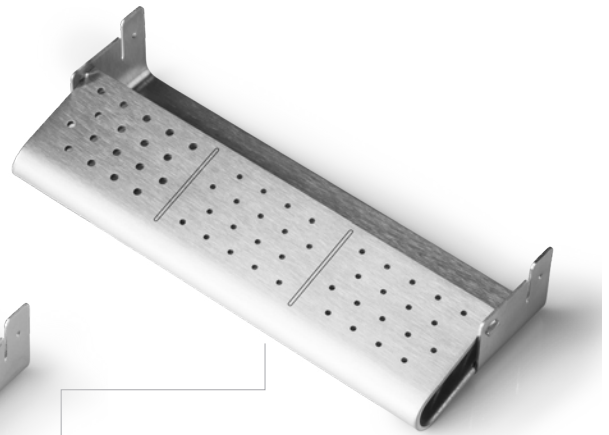
REF HT1000:

- Holders for 13 FG and 5 RA instruments



REF HT2000:

- Holders for 26 FG and 10 RA instruments



REF HT3000:

- Holders for 36 FG and 18 RA instruments

Product description

- Dismountable individual parts made of high-quality stainless steel
- Without hard to reach fissures and hollows
- Rounded edges



Use

- Organization of routine instrumentation for all standard treatment protocols
- Storage and transport of rotary instruments

Benefits

- Organization and availability of the rotating instruments
- Easy instrument removal due to irregular arranged position
- Hygiene due to 2 individual parts free from hard to reach fissures and hollows
- Durable and resistant sterilizable stainless steel

Intensiv SA


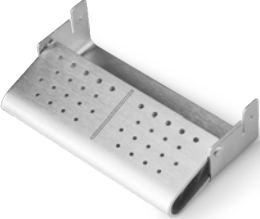
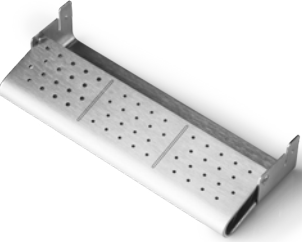
Via al Molino 107
6926 Montagnola
Switzerland

Tel. + 41 91 986 50 50
info@intensiv.ch
www.intensiv.ch



Intensiv HygienicTray

Send to customer.care@intensiv.ch

Product	REF	Price	Quantity 
 <p>Intensiv HygienicTray, HT1000 Holders for: 13 FG and 5 RA instruments 50x40x30 mm (LxWxH)</p>	REF HT1000		
 <p>Intensiv HygienicTray, HT2000 Holders for: 26 FG and 10 RA instruments 104x44x30 mm (LxWxH)</p>	REF HT2000		
 <p>Intensiv HygienicTray, HT3000 Holders fo: 36 FG and 18 RA instruments 50x40x30 mm (LxWxH)</p>	REF HT3000		

CLINIC-STAMP



Intensiv Catalogue

Dental Depot _____

Date _____

Signature _____

AUTOMATIC E-MAIL ENQUIRY

Intensiv SA
Via al Molino 107
6926 Montagnola
Switzerland

Tel. + 41 91 986 50 50
info@intensiv.ch
www.intensiv.ch

