

Intensiv ApproxOpener

Clinically tested by Dr. Consuelo Damiano, Dr. Valentina Amateis, Milan, Italy

Manual and serrated metal strip for opening of tight contact points between teeth and for removal of coronal excess of adhesive aesthetic restorations

Orthodontic treatments which require the reduction of tooth mesial/distal dimensions - so-called stripping - the contact points in crooked tooth position are often extremely tight. An adequate stripping method foresees the opening of the tight contact points.

The defined removal of tooth tissue serves to create the necessary space to move the teeth into a harmonious and correct position.

Within the adhesive indirect restoration, material excess may emerge at coronal level.

The removal of emerged adhesive material is necessary to ensure the long life of the restoration.

Product description

- Manual metal strip clamped into a small metal bow; in 3 versions
- Serrated, thickness 0.08mm.
- Serrated and one-sided diamond coating (8µm), thickness approx. 0.09mm.
- Serrated and double-sided diamond coating (8µm), thickness approx. 0.10mm.
- Height of strip: 4mm.
- Length of strip: 20mm.
- Total height of the instrument: 18mm.
- Total length of the instrument: 27.5mm.
- Stainless steel.
- Sterilizable, reusable.

Indications

- Manual interproximal opening of tight contact points in orthodontic treatments (stripping)
- Removal of emerged adhesive material in the coronal area

Benefits

- Introduction of the strip between the contact points without friction thanks to the ultra-fine grain and serrated strip border
- Approximal opening for application of the stripping method
- Secure strip movement thanks to tension of the strip in the bow
- Removal of emerged adhesive material without scratches thanks to non-diamond coated version
- The handle of the instrument can be adapted to the clinical situation



Intensiv IPR-DistanceControl

Clinically tested by Dr. Consuelo Damiano, Milan, Italy

Manual stainless steel instrument for the measurement and control of tooth distances heated during IPR protocols

During orthodontic treatments using the interproximal stripping process, predefined and measured interdental spaces must be created.

With the stripping method, measurable and calibrated spaces are created through the removal of dental tissue in order to obtain exactly the space necessary for the movement of teeth into a harmonious and correct position.

Product description

- Intensiv IPR (InterProximalReduction)-DistanceControl is a manual measuring instrument made of stainless steel.
- It consists of an eight-part instrument set made of stainless steel with handle.
- Thicknesses: 0.10mm, 0.15mm, 0.20mm, 0.25mm, 0.30mm, 0.40mm, 0.50mm, 1.0mm.
- The thickness indication is marked on each instrument.
- Height of measuring section: 4mm.
- Length of measuring section: 40mm.
- Total length of the instrument: 50mm.
- Removable plastic rivet to secure the 8 instruments.
- Sterilizable (except plastic rivet), multiple use.

Indications

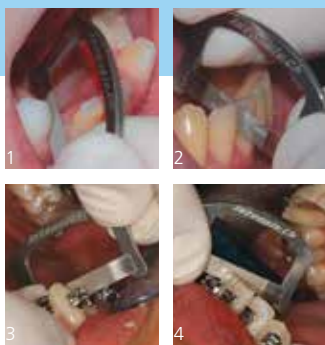
- Stripping in orthodontic treatments

Benefits

- Durable stainless steel
- Secure application due to the handle
- Variable application of the eight instruments, individually or fixed together
- Precise measurement of distances thanks to the calibrated millimetre scale
- Large number of measurable distances, thanks to the combination of 8 instruments
- Easy reading of the gauge dimension



New



1-2) Clinical pictures:
Dr. Consuelo Damiano, Milan, Italy
3-4) Clinical pictures:
Francesco Garino, Turin, Italy

Serrated



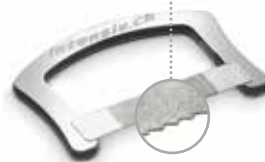
Ref. AO2018/3
Intensiv ApproxOpener

Serrated,
double-sided
8µm diamond
coating



Ref. AO2018DS/3
Intensiv ApproxOpener Double Sided

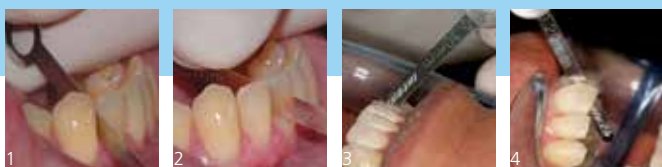
Serrated,
one-sided
8µm diamond
coating



Ref. AO2018OS/3
Intensiv ApproxOpener One Sided

1:1

New



Clinical pictures:
Dr. Francesco Garino, Turin, Italy

Available as set

1:1



Ref. IPR-DC Set

Available as single pieces



Ref. IPR-DC010/3, thickness 0.10 mm
Ref. IPR-DC015/3, thickness 0.15 mm
Ref. IPR-DC020/3, thickness 0.20 mm
Ref. IPR-DC025/3, thickness 0.25 mm
Ref. IPR-DC030/3, thickness 0.30 mm
Ref. IPR-DC040/3, thickness 0.40 mm
Ref. IPR-DC050/3, thickness 0.50 mm
Ref. IPR-DC100/3, thickness 1.00 mm