

Intensiv Proxoshape

Universities of Zurich and Bern, Switzerland



Oscillating diamond-coated files for the removal of overhangs and finishing of proximal filling surfaces

Perfectly adapted and polished proximal filling surfaces and crown margins are a prerequisite for the maintenance of the health of the periodontics and the prevention of secondary caries. Proxoshape meets the requirements to correctly model the filling surfaces and margins and prepares them for the high gloss finish.

Intensiv Proxoshape

- 4 one-sided diamond coated files in grits 125µm / 90µm / 40µm / 15µm.
- 3 files with extended working surface in grits 90µm / 40µm / 15µm.
- 2 narrow files in grits 40µm / 15µm.
- 1 distal diamond-coated file in 15µm.

Intensiv Proxoshape Flexible

- 3 single-sided diamond files in 60, 40 and 15µm.
- 2 file lengths: 8.5mm and 11mm.
- Minimal metal thickness 0.1mm.

Intensiv Proxoshape Coarse

- One-sided diamond coated and perforated file, in 80µm, 2 rows of perforation.

Indications

- Removal of:
 - Filling and cement overhangs
- Finishing and trimming of:
 - proximal crown margins in gold or ceramic
- Contouring and finishing of:
 - proximal restoration surfaces

Benefits

- Easier access to the interproximal space
- No iatrogenic damage to adjacent teeth
- Prevention of surface wave generation caused by rotating burs

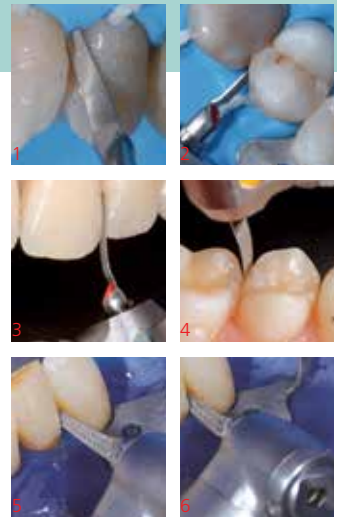
All Intensiv Proxoshape are available in packages of 1, 3 or 6 pcs

Intensiv Proxoshape Set, Ref. 100
1 pcs of PS0, PS1, PS2, PS3, Ejector and Diakleen

Intensiv Proxoshape Set Optional, Ref. 115
1 pcs of PS0, PS1, PS2, PS3, PS1L, PS2L, PS3L, PS2S, PS3S, PS3G

Intensiv Proxoshape Flexible Set, Ref. 110
1 pcs of PSF60, PSF40, PSF15, PSF60L, PSF40L, PSF15L

To be used in combination with Intensiv Swingle, WG-69 LT Cons (with light), pages 58-59



Clinical pictures:

- 1-2) University Brescia, Italy
- 3-4) University Zurich, Switzerland
- 5-6) Dr. A. Devigus, Bülach, Switzerland

Intensiv Proxoshape:

- 1) Interproximal restoration finishing with file PS2
- 2) Treatment of the zone underneath the reconstructed contact points without damaging the neighboring teeth with the PS3 file.

Intensiv Proxoshape Flexible:

- 3) Finishing of the cervical margin with the PSF40L file.
- 4) Finishing the interproximal restoration with the PSF15L file.

Intensiv Proxoshape Coarse:

- 5-6) Modeling with PSC80



L mm	8,5	8,5	8,5	8,5	8,5	11,0	11,0	11,0	11,0	8,5	8,5	3	8,5
µm	125	90	60	40	15	90	60	40	15	40	15	15	80
Standard 0,2 mm													
524		PS1				PS1L							
534	PS0												
524													PSC80
514				PS2				PS2L		PS2S			
504					PS3				PS3L		PS3S	PS3G	
Flexible 0,1 mm													
514			PSF60				PSF60L						
514				PSF40				PSF40L					
504					PSF15				PSF15L				

Intensiv Bevelshape

University of Bern, Switzerland



Oscillating diamond files for perfect bevelled edges and preparation margins

A key factor for an ideal cavity preparation for composite fillings, gold inlays and overlays is a precise margin bevelling with sharp edges. In the case of prosthetic restorations, the margin finishing of shoulder preparations and the bevelling of chamfer preparations are decisive for the quality of the result. The single-side diamond coating helps to prevent iatrogenic damage to adjacent teeth and injury to periodontal tissue.

Product description

- Axially curved files with distally bent ends.
- 3 files diamond-coated over the entire convex working length in grits 40µm / 25µm / 15µm.
- 3 files diamond-coated over the convex distal end only in grits 40µm / 25µm / 15µm.

Indications

- Margin bevelling for
 - Anterior composites
 - Composite slots
 - Inlays and onlays
- Margin finishing in veneer preparations
- Crown preparations
 - Margin finishing in chamfer preparation
 - Bevelling in shoulder preparation

Benefits

- Perfectly polished and clearly outlined profiles with perfect sharp cut edges
- No microfractures and no unforeseen chipping of dental enamel prisms
- Prevention of enamel defects and grooves on the preparation margin
- No iatrogenic damages to adjacent teeth



- 1+2) Perfect adaptation of the file to the cavity wall and floor
- 3) The file allows the bevelling of a cervical shoulder, as well
- 4) Margin finishing in veneer preparation with BS40 or BS40T
- 5) Margin bevelling in class IV restorations

All Intensiv Bevelshape are available in packages of 1, 3 or 6 pcs

To be used in combination with Intensiv Swingle, WG-69 LT Cons (with light), pages 58-59

Intensiv Bevelshape Set, Ref. 103
1 pcs of BS40, BS25, BS15
BS40T, BS25T, BS15T



Ref. 103									
µm		40	25	15		40	25	15	
514	■	BS40				BS40T			
514	□		BS25				BS25T		
504	■			BS15				BS15T	
		Bevelshape whole length on one side diamond-coated, axially and distally bent				Bevelshape distally diamond-coated (for crown preparations), distally bent			