

Intensiv Sets Direct and Indirect A & P

Clinically tested by Dr. Roberto Spreafico, Busto Arsizio, Italy

Diamond instruments for anterior and posterior direct and indirect restorations

Aesthetic direct and indirect restorations play a predominant role in the technical background of modern dentistry and represent a new limit between the conservative dentistry and the prosthesis for recovering individual elements.

A complete set of instruments for all clinical indications in the field of direct and indirect aesthetic restorations, is selected.



Ref. N202PI



Ref. N202PD



Ref. N202ADI

Product description

- 3 sets of 8 diamond-coated instruments each, placed in the stainless steel Intensiv HygienicTray HT100.

Ref. N202PI (Posterior indirect restorations)

- 1 conical instrument, 8mm length, 80µm grit, 012 diameter for interproximal separation.
- 2 conical instruments, 8mm length, 80 and 25µm grits, 014 diameter for interproximal preparation.
- 2 conical instruments, 6mm length, 80 and 25µm grits, 014 diameter for the preparation of internal walls of the cavities.
- 1 conical tapered instrument, 4mm length, 25µm grit, 020 diameter for the finishing of occlusal surface of the cavity.
- 2 conical tapered instruments, 6mm length, 80 and 25µm grits, 018 diameter for cervical preparation.

Ref. N202PD (Posterior direct restorations)

- 1 cylindrical instrument, 3mm length, 80µm grit, 009 diameter for the opening of the cavity.
- 2 cylindrical instruments, 6mm length, 80 and 25µm grits, 011 diameter for the preparation and finishing of the interproximal and occlusal margins.
- 2 cylindrical instruments, 8mm length, 80 and 25µm grits, 014 diameter for the preparation and finishing of the interproximal and occlusal margins.
- 2 cylindrical instruments, 6mm length, 80 and 25µm grits, 013 diameter for the preparation and finishing of the interproximal and occlusal margins.
- 1 flame instrument, 7mm length, 40µm grit, 010 diameter for the finishing of veneer preparation.

Ref. N202ADI (Anterior direct and indirect restorations)

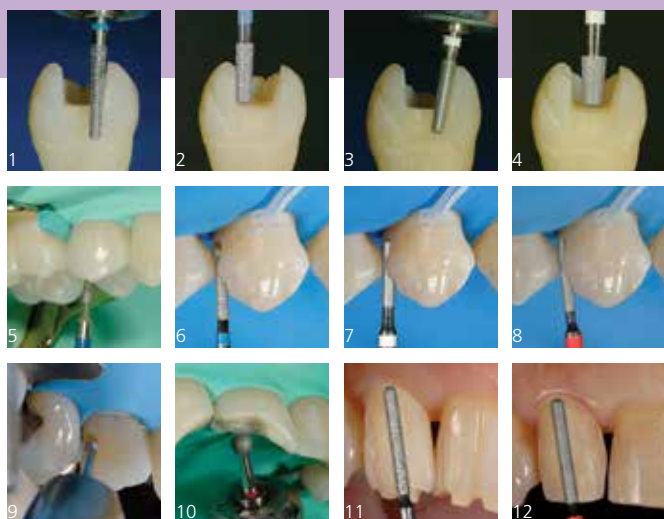
- 1 ball instrument, 60µm grit, 009 diameter for the opening of the cavity.
- 2 ball instruments, 90 and 40µm grits, 014 diameter for the preparation and finishing of the interproximal and occlusal margins.
- 2 ball instruments, 106 and 40µm grits, 023 diameter for the opening and beveling of palatal margins.
- 2 cylindrical instruments with rounded end, 10 mm length, 90 and 40µm grits, 012 diameter for the production of guiding grooves and the finishing of veneer preparation.
- 1 flame instrument, 7mm length, 40µm grit, 010 diameter for the beveling of axial walls.

Indications

- Preparation of cavities for direct and indirect restorations in anterior and posterior areas

Benefits

- Highly conservative preparations with perfectly finished walls and margins of cavities
- Placed in Intensiv HygienicTray (HT100) bur holders, to facilitate the identification and the organization of the sets
- Customizable sets with additional instrument insertion (oscillating instruments, rubber cups etc.) thanks to the 13 FG and 5 RA holes
- Form and size congruence between the preparation and finishing instruments



- 1) FG 8427/8425: Interproximal and cervical preparation
- 2) FG 8525 : preparation of the walls
- 3) FG 3427/3425: finishing of interproximal and cervical margins
- 4) FG 3413R: finishing of the occlusal surface
- 5) FG 8212S: opening of the cavity for direct restorations
- 6) FG 8510/8614/8514: preparation of interproximal and occlusal margins
- 7) FG 3514/3614B/3414B: finishing of the margins
- 8) FG 4205L: beveling of axial walls
- 9) FG 200S/201S/400S: opening and preparation of the cavity
- 10) FG 4201S/4400S: beveling of palatal margin
- 11) FG 305L: production of vestibular guiding grooves and preparation of incisal margin
- 12) FG 4307N: finishing of the preparation for veneers

Intensiv Set Indirect Posterior

Ref. N202PI								
ISO ø 1/10 mm	012	014	014	018	020	014	014	018
L mm	8.0	6.0	8.0	6.0	4.0	6.0	8.0	6.0
µm	80	80	80	80	25	25	25	25
524	116							
524 <input checked="" type="checkbox"/>		8425	8427	8525				
514 <input type="checkbox"/>					3413R	3425	3427	3525
ISO No.	314 172	314 545	314 546	314 545	314 544	314 545	314 546	314 545

Clinical pictures:
Dr. Roberto Spreafico,
Busto Arsizio, Italy

Intensiv Set Direct Posterior

Ref. N202PD								
ISO ø 1/10 mm	009	011	014	013	010	011	014	013
L mm	3.0	6.0	8.0	6.0	7.0	6.0	8.0	6.0
µm	80	80	80	80	40	25	25	25
524 <input checked="" type="checkbox"/>	8212S	8510	8614	8514				
514 <input checked="" type="checkbox"/>					4205L			
514 <input type="checkbox"/>						3514	3614B	3414B
ISO No.	314 108	314 157	314 158	314 157	314 248	314 157	314 158	314 157

Intensiv Set Direct & Indirect Anterior

Ref. N202ADI								
ISO ø 1/10 mm	009	014	023	012	010	013	022	012
L mm				10.0	7.0			10.0
µm	60	90	106	90	40	40	40	40
524	200S	201S	400S	305L				
514 <input checked="" type="checkbox"/>					4205L	4201S	4400S	4307N
ISO No.	314 001	314 001	314 001	314 142	314 248	314 001	314 001	314 142